

Ø 5,25	Platform: Ø 4,75 mm	Body: Ø 3,25 mm	Thread pitch: 1,2 mm	Tapered apex
---------------	---------------------	-----------------	----------------------	--------------

PX (post extractive)



Length	Neck h 2,5 mm	Code
9,0		05ISTPX520925
11,0		05ISTPX521125
13,0		05ISTPX521325



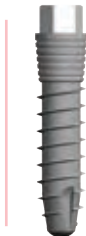
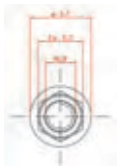
Length	Neck h 4,0 mm	Code
9,0		05ISTPX520940
11,0		05ISTPX521140
13,0		05ISTPX521340

Surgical protocol

Tissue punch* Ø 5	Cortical drill Ø 2,3	Cylindrical drill Ø 2,75	Cylindrical drill Ø 3,25	In compact bone	Countersink Ø 4,75	Bone tap Ø 5,25
MTCA50	DSP	DSS275	DSS325		CSFX	CT47
	Max. speed 500 rpm	Max. speed 500 rpm	Max. speed 500 rpm		Max. speed 250 rpm	Speed 15 to 18 rpm

Ø 3,5	Platform: Ø 3,7 mm	Transmucous part: h 2 mm	Body: Ø 2,75 mm	Thread pitch: 1,2 mm	Tapered apex
--------------	--------------------	--------------------------	-----------------	----------------------	--------------

XT (extended)



Length	Code
9,0	05ISTXT350935
11,0	05ISTXT351135
13,0	05ISTXT351335

Surgical protocol

Cortical drill Ø 2,3	Cylindrical drill Ø 2,75	Bone tap Ø 3,5
DSP	DSS275	CT35
Max. speed 500 rpm	Max. speed 500 rpm	Speed 15 to 18 rpm

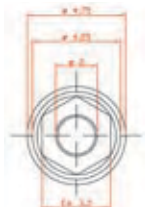
Ø 3,75

Platform: Ø 4,75 mm

Body: Ø 2,75 mm

Thread pitch: 1,2 mm

Tapered apex



Length

9,0

11,0

13,0

Code

05IFT3709

05IFT3711

05IFT3713

Surgical protocol

Tissue punch* Ø 5	>	Cortical drill Ø 2,3	>	Cylindrical drill Ø 2,75	>	In compact bone	>	Countersink Ø 4,75	>	Bone tap Ø 3,75
MTCA50		DSP		DSS275				CSFX		CT37
		Max. speed 500 rpm		Max. speed 500 rpm				Max. speed 250 rpm		Speed 15 to 18 rpm

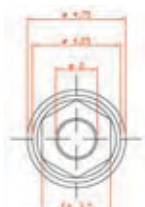
Ø 4,25

Platform: Ø 4,75 mm

Body: Ø 2,75 mm

Thread pitch: 1,2 mm

Tapered apex



Length

9,0

11,0

13,0

Code

05IFT4209

05IFT4211

05IFT4213

Surgical protocol

Tissue punch* Ø 5	>	Cortical drill Ø 2,3	>	Cylindrical drill Ø 2,75	>	In compact bone	>	Countersink Ø 4,75	>	Bone tap Ø 4,25
MTCA50		DSP		DSS275				CSFX		CT42
		Max. speed 500 rpm		Max. speed 500 rpm				Max. speed 250 rpm		Speed 15 to 18 rpm

*The choice of surgical technique - using the tissue punch or performing a flap - is up to the clinician