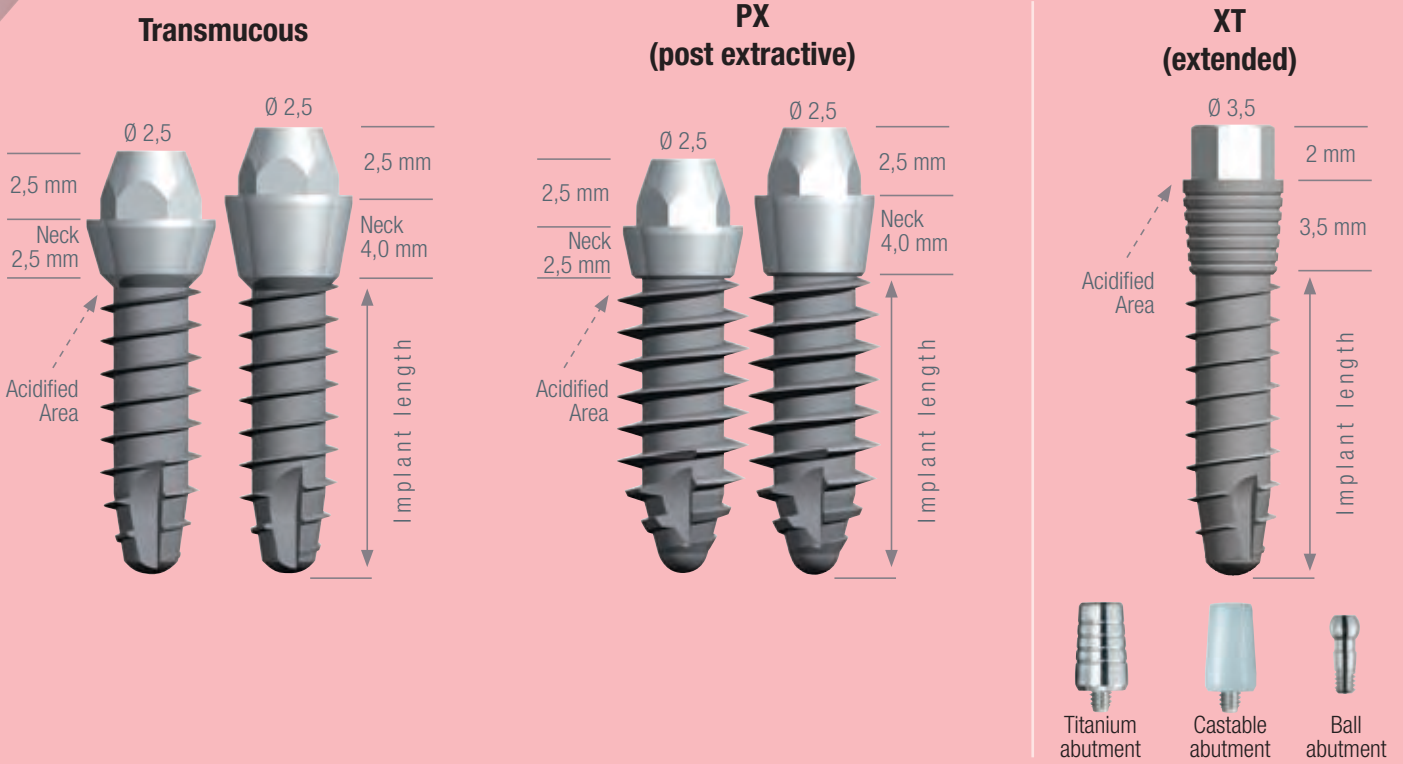


S-TYPE



Transmucous

| | | Neck Height 2,5 | Neck Height 4,0 |
|----------|--------|-------------------------|-------------------------|
| Platform | 4,75 | Ø 3,75 | Length |
| | | 9,0 | 05IST370925 05IST370940 |
| | | 11,0 | 05IST371125 05IST371140 |
| | | 13,0 | 05IST371325 05IST371340 |
| | | Ø 4,25 | Length |
| | | 9,0 | 05IST420925 05IST420940 |
| | 11,0 | 05IST421125 05IST421140 | |
| | 13,0 | 05IST421325 05IST421340 | |
| | Ø 4,75 | Length | |
| | 9,0 | 05IST470925 05IST470940 | |
| | 11,0 | 05IST471125 05IST471140 | |
| | 13,0 | 05IST471325 05IST471340 | |

XT (extended)

| | | Ø | Length |
|----------|-----|-----|--------------------|
| Platform | 3,7 | 3,5 | 9,0 05ISTXT350935 |
| | | | 11,0 05ISTXT351135 |
| | | | 13,0 05ISTXT351335 |
| | | | |

PX (post extractive)

| | | Neck Height 2,5 | Neck Height 4,0 |
|----------|------|-----------------|-----------------------------|
| Platform | 4,75 | Ø 5,25 | Length |
| | | 9,0 | 05ISTPX520925 05ISTPX520940 |
| | | 11,0 | 05ISTPX521125 05ISTPX521140 |
| | | 13,0 | 05ISTPX521325 05ISTPX521340 |

Transmucous implant is a mono phase fixture to be placed with a very simple, minimal invasive surgery. Ideal implant-prosthetic rehabilitation for single or multiple elements: in fact, it is possible to choose between titanium abutment and rotating castable abutment or with an anti-rotation mechanism, for such kind of prosthesis:

- bar retained overdenture
- screwed bridge
- cemented bridge
- Toronto bridge (screwed overdenture)

PX (post extractive) implant is used exclusively as a post-extraction implant, thanks to its particular apical design that reproduces the anatomy of the root, thus allowing a perfect positioning in the post-extraction socket.

- Self-threading grade 4 titanium fixture
- It allows disparallelism up to 20°
- Microroughened surface (B.O.A.T. treatment)
- Three anti-rotation threads in the apical portion
- Surgical screw included in the packaging

S-Type XT (extended) implants are a real innovation from the prosthetic point of view. In fact, with a diameter of 3,5 mm (neck height 3,5 mm), they allow the insertion of different abutments:

- titanium abutment (rotating and anti-rotation)
- castable abutment (rotating and anti-rotation)
- ball abutment

The different abutments are interchangeable on the same implant, also in different stages.

Their versatility allows to pass in a fast way from a traditional prosthetic solution to the OVD system simply unscrewing the abutment and substituting it with a ball. Moreover, in case of an overdenture, the consumed ball can be substituted with a new one without touching the osseointegrated implant.

- Self-threading grade 5 titanium fixture
- Microroughened surface (B.O.A.T. treatment)
- Three anti-rotation threads in the apical portion
- Surgical screw NOT included in the packaging



Packaging

- Packaging in compliance with ISO 11607-1 and 2.
- Sterilization by gamma rays 25 kGy
- Sterility guaranteed for 5 years by waterproof double packaging in airtight sealed glass vial and blister

Ø 3,75 Platform: Ø 4,75 mm Body: Ø 2,75 mm Thread pitch: 1,2 mm Tapered apex

| | | | | | | |
|--|--|--------|--------------------|--|--------|--------------------|
| | | Length | Neck h 2,5 mm | | Length | Neck h 4,0 mm |
| | | 9,0 | 05IST370925 | | 9,0 | 05IST370940 |
| | | 11,0 | 05IST371125 | | 11,0 | 05IST371140 |
| | | 13,0 | 05IST371325 | | 13,0 | 05IST371340 |

Surgical protocol

| | | | | | |
|----------------------|-------------------------|-----------------------------|-----------------|-----------------------|-----------------------|
| Tissue punch* Ø 5 | Cortical drill Ø 2,3 | Cylindrical drill Ø 2,75 | In compact bone | Countersink Ø 4,75 | Bone tap Ø 3,75 |
| MTCA50 | DSP | DSS275 | | CSFX | CT37 |
| | Max. speed 500 rpm | Max. speed 500 rpm | | Max. speed 250 rpm | Speed 15 to 18 rpm |

Ø 4,25 Platform: Ø 4,75 mm Body: Ø 2,75 mm Thread pitch: 1,2 mm Tapered apex

| | | | | | | |
|--|--|--------|--------------------|--|--------|--------------------|
| | | Length | Neck h 2,5 mm | | Length | Neck h 4,0 mm |
| | | 9,0 | 05IST420925 | | 9,0 | 05IST420940 |
| | | 11,0 | 05IST421125 | | 11,0 | 05IST421140 |
| | | 13,0 | 05IST421325 | | 13,0 | 05IST421340 |

Surgical protocol

| | | | | | |
|----------------------|-------------------------|-----------------------------|-----------------|-----------------------|-----------------------|
| Tissue punch* Ø 5 | Cortical drill Ø 2,3 | Cylindrical drill Ø 2,75 | In compact bone | Countersink Ø 4,75 | Bone tap Ø 4,25 |
| MTCA50 | DSP | DSS275 | | CSFX | CT42 |
| | Max. speed 500 rpm | Max. speed 500 rpm | | Max. speed 250 rpm | Speed 15 to 18 rpm |

Ø 4,75 Platform: Ø 4,75 mm Body: Ø 3,25 mm Thread pitch: 1,2 mm Tapered apex

| | | | | | | |
|--|--|--------|--------------------|--|--------|--------------------|
| | | Length | Neck h 2,5 mm | | Length | Neck h 4,0 mm |
| | | 9,0 | 05IST470925 | | 9,0 | 05IST470940 |
| | | 11,0 | 05IST471125 | | 11,0 | 05IST471140 |
| | | 13,0 | 05IST471325 | | 13,0 | 05IST471340 |

Surgical protocol

| | | | | | | |
|----------------------|-------------------------|-----------------------------|-----------------------------|-----------------|-----------------------|-----------------------|
| Tissue punch* Ø 5 | Cortical drill Ø 2,3 | Cylindrical drill Ø 2,75 | Cylindrical drill Ø 3,25 | In compact bone | Countersink Ø 4,75 | Bone tap Ø 4,75 |
| MTCA50 | DSP | DSS275 | DSS325 | | CSFX | CT47 |
| | Max. speed 500 rpm | Max. speed 500 rpm | Max. speed 500 rpm | | Max. speed 250 rpm | Speed 15 to 18 rpm |

*The choice of surgical technique - using the tissue punch or performing a flap - is up to the clinician

| | | | | |
|---------------|---------------------|-----------------|----------------------|--------------|
| Ø 5,25 | Platform: Ø 4,75 mm | Body: Ø 3,25 mm | Thread pitch: 1,2 mm | Tapered apex |
|---------------|---------------------|-----------------|----------------------|--------------|

PX (post extractive)



| Length | Neck h 2,5 mm | Code |
|--------|---------------|----------------------|
| 9,0 | | 05ISTPX520925 |
| 11,0 | | 05ISTPX521125 |
| 13,0 | | 05ISTPX521325 |



| Length | Neck h 4,0 mm | Code |
|--------|---------------|----------------------|
| 9,0 | | 05ISTPX520940 |
| 11,0 | | 05ISTPX521140 |
| 13,0 | | 05ISTPX521340 |

Surgical protocol

| | | | | | | |
|----------------------|-------------------------|-----------------------------|-----------------------------|-----------------|-----------------------|-----------------------|
| Tissue punch* Ø 5 | Cortical drill Ø 2,3 | Cylindrical drill Ø 2,75 | Cylindrical drill Ø 3,25 | In compact bone | Countersink Ø 4,75 | Bone tap Ø 5,25 |
| MTCA50 | DSP | DSS275 | DSS325 | | CSFX | CT47 |
| | Max. speed 500 rpm | Max. speed 500 rpm | Max. speed 500 rpm | | Max. speed 250 rpm | Speed 15 to 18 rpm |

| | | | | | |
|--------------|--------------------|--------------------------|-----------------|----------------------|--------------|
| Ø 3,5 | Platform: Ø 3,7 mm | Transmucous part: h 2 mm | Body: Ø 2,75 mm | Thread pitch: 1,2 mm | Tapered apex |
|--------------|--------------------|--------------------------|-----------------|----------------------|--------------|

XT (extended)



| Length | Code |
|--------|----------------------|
| 9,0 | 05ISTXT350935 |
| 11,0 | 05ISTXT351135 |
| 13,0 | 05ISTXT351335 |

Surgical protocol

| | | |
|-------------------------|-----------------------------|-----------------------|
| Cortical drill Ø 2,3 | Cylindrical drill Ø 2,75 | Bone tap Ø 3,5 |
| DSP | DSS275 | CT35 |
| Max. speed 500 rpm | Max. speed 500 rpm | Speed 15 to 18 rpm |

Cortical drills



Ø 1,8 mm

05DSP18



Ø 2,3 mm

05DSP

Tissue punch



Ø 5,0 mm

05MTCA50

Cylindrical drills with stops



Ø 2,75 mm

05DSS275



Ø 3,25 mm

05DSS325

Countersink

max 250 rpm



Ø 4,75 mm

05CSFX

Use of drills with stop

They are used with the stops applied at the desired length, matching the implant one.

They are also laser marked, so that they can be used also without stops.

The "Unica" drill can be used for the whole range of Leader Italia implants.

Max. use: 10 site preparations

Calibrated stops

Height
9 mm
11 mm



For drills with stop

05STP09

05STP11

Extension tool



For all drills

01TEXT

They are applied on the drill to reach the desired working length.

They are very useful when working near sensible areas such as lower alveolar site and upper sinus.

Bone taps



Connections



Accessories



Cortical drill



Ø 2,3 mm

05DSP

Bone Tap



Ø 3,5 mm

05CT35

Cylindrical drills with stops



Ø 2,75 mm

05DSS275

Calibrated stops

Height
9 mm
11 mm



For drills with stop

05STP09

05STP11

Connections

Manual



05TWXT

Short

05TWXTL

Long

Contra-angle



05TLCAXT

Accessories



Ratchet

01TW



Alveolar probe

05SAP



Tweezers

01SATT

Titanium



Manual digma

05TLMST2



Handle for digma

05BTLM

for TLMST2



Transfer

- Titanium gr 5
- Passing screw code PSTR



Code

Packaging

05TR475

1 piece



Laboratory analog

Stainless steel

Code

Packaging

05ANST

1 piece



rotating anti-rotation

Rotating/Anti-rotation titanium abutment with screw

- Titanium gr 5
- Adjustable
- Passing screw code PS
- Anti-rotation for single elements
- Rotating for multiple elements: allows disparallelism up to 20°



Code

Packaging

05ATIR rotating

1 piece

05ATI anti-rotation

1 piece



rotating anti-rotation

Rotating/Anti-rotation castable abutment with screw

- Adjustable
- Passing screw code PS
- Anti-rotation for single elements
- Rotating for multiple elements: allows disparallelism up to 20°



Code

Packaging

05CLR rotating

1 piece

05CL anti-rotation

1 piece



Long tapered closing screw for abutment

- Titanium gr 5
- To be used instead of the passing screw PS in order to use the abutment as a temporary one

Code

Packaging

05HCIST

1 piece



Healing cap

- Titanium gr 5
- To be inserted together with the implant to enable the healing of perio-implant soft tissues

Code

Packaging

05HC3IST

1 piece



Transfer

- Titanium gr 5
- Passing screw code PSTRXT



Code

Packaging

05TRXT

1 piece



Analog

Stainless steel

Code

Packaging

05ANXT

1 piece



rotating anti-rotation



Rotating/Anti-rotation titanium abutment with screw

- Titanium gr 5
- Adjustable
- Passing screw code PSXT
- Anti-rotation for single elements
- Rotating for multiple elements



Code

Packaging

05ATIRXT rotating

1 piece

05ATIXT anti-rotation

1 piece



rotating anti-rotation



Rotating/Anti-rotation castable abutment with screw

- Adjustable
- Passing screw code PSXT
- Anti-rotation for single elements
- Rotating for multiple elements, bars or Toronto bridge



Code

Packaging

05CLRXT rotating

1 piece

05CLXT anti-rotation

1 piece



Ball abutment

- Titanium gr 5
- Normo ball 2,5 mm
- For overdenture to be used with teflon OT-CAP**

Code

05AB25

Packaging

1 piece



Long tapered closing screw for abutment

- Titanium gr 5
- To be used instead of passing screw PS in order to use the abutment as temporary one or for healing

Code

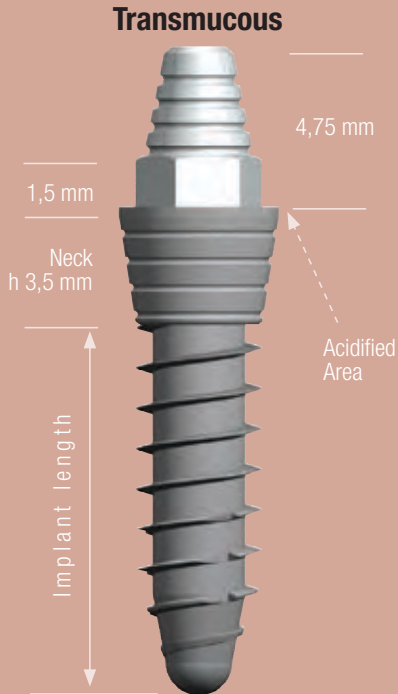
05HCIXT

Packaging

1 piece

** Teflon retentive caps see page 68

FIX-TYPE



- Self-threading grade 4 titanium fixture
- Microroughened surface (B.O.A.T. treatment)
- Tapered micro-ruled head for high retentive effect
- Three anti-rotation threads

- One-piece implant.
- The integrated abutment - height 4,75 mm - has been **designed for cemented prosthesis**.
- It allows faster impressions.
- The coronal part is already set up.
- It allows disparallelism up to 15°.

| | | Ø | Length | Code |
|----------|------|------|--------|------------------|
| Platform | 4,75 | 3,75 | 9,0 | 05IFT3709 |
| | | | 11,0 | 05IFT3711 |
| | | | 13,0 | 05IFT3713 |
| | 4,25 | 9,0 | 9,0 | 05IFT4209 |
| | | | 11,0 | 05IFT4211 |
| | | | 13,0 | 05IFT4213 |

Packaging

- Packaging in compliance with ISO 11607-1 and 2.
- Sterilization by gamma rays 25 kGy
- Sterility guaranteed for 5 years by waterproof double packaging in airtight sealed glass vial and blister



Ø 3,75

Platform: Ø 4,75 mm

Body: Ø 2,75 mm

Thread pitch: 1,2 mm

Tapered apex



Length

9,0

11,0

13,0

Code

05IFT3709

05IFT3711

05IFT3713

Surgical protocol

| | | | | | | | | | | |
|----------------------|---|-------------------------|---|-----------------------------|---|-----------------|---|-----------------------|---|-----------------------|
| Tissue punch* Ø 5 | > | Cortical drill Ø 2,3 | > | Cylindrical drill Ø 2,75 | > | In compact bone | > | Countersink Ø 4,75 | > | Bone tap Ø 3,75 |
| MTCA50 | | DSP | | DSS275 | | | | CSFX | | CT37 |
| | | Max. speed 500 rpm | | Max. speed 500 rpm | | | | Max. speed 250 rpm | | Speed 15 to 18 rpm |

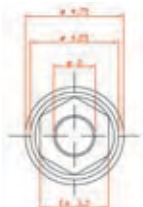
Ø 4,25

Platform: Ø 4,75 mm

Body: Ø 2,75 mm

Thread pitch: 1,2 mm

Tapered apex



Length

9,0

11,0

13,0

Code

05IFT4209

05IFT4211

05IFT4213

Surgical protocol

| | | | | | | | | | | |
|----------------------|---|-------------------------|---|-----------------------------|---|-----------------|---|-----------------------|---|-----------------------|
| Tissue punch* Ø 5 | > | Cortical drill Ø 2,3 | > | Cylindrical drill Ø 2,75 | > | In compact bone | > | Countersink Ø 4,75 | > | Bone tap Ø 4,25 |
| MTCA50 | | DSP | | DSS275 | | | | CSFX | | CT42 |
| | | Max. speed 500 rpm | | Max. speed 500 rpm | | | | Max. speed 250 rpm | | Speed 15 to 18 rpm |

*The choice of surgical technique - using the tissue punch or performing a flap - is up to the clinician

Cortical drill



Ø 2,3 mm

05DSP

Tissue punch



Ø 5,0 mm

05MTCA50

Cylindrical drill with stops



Ø 2,75 mm

05DSS275

Countersink

max 250 rpm



Ø 4,75 mm

05CSFX

Calibrated stops

Height
9 mm
11 mm



For drills with stop

05STP09

05STP11

Extension tool



For all drills

01TEXT

Bone taps



Ø 3,75 mm

05CT37



Ø 4,25 mm

05CT42

Accessories



Ratchet

01TW



Alveolar probe

05SAP



Tweezers

01SATT

Titanium



Manual digma

05TLMST2



Handle for digma

05BTLM

for TLMST2

Connections

Short



Ø 2,5 mm

05TEXSTS

Long



Ø 2,5 mm

05TEXSTL

Prosthetic components for FIX-TYPE implants



Analog

Stainless steel

Code

05ANFT

Packaging

1 piece



rotating

anti-rotation

Rotating/Anti-rotation castable abutment

- Adjustable
- Anti-rotation for single elements and can be used as transfer
- Rotating for multiple elements: allows disparallelism up to 20°

Code

05CLRFT rotating

05CLFT anti-rotation

Packaging

1 piece

1 piece